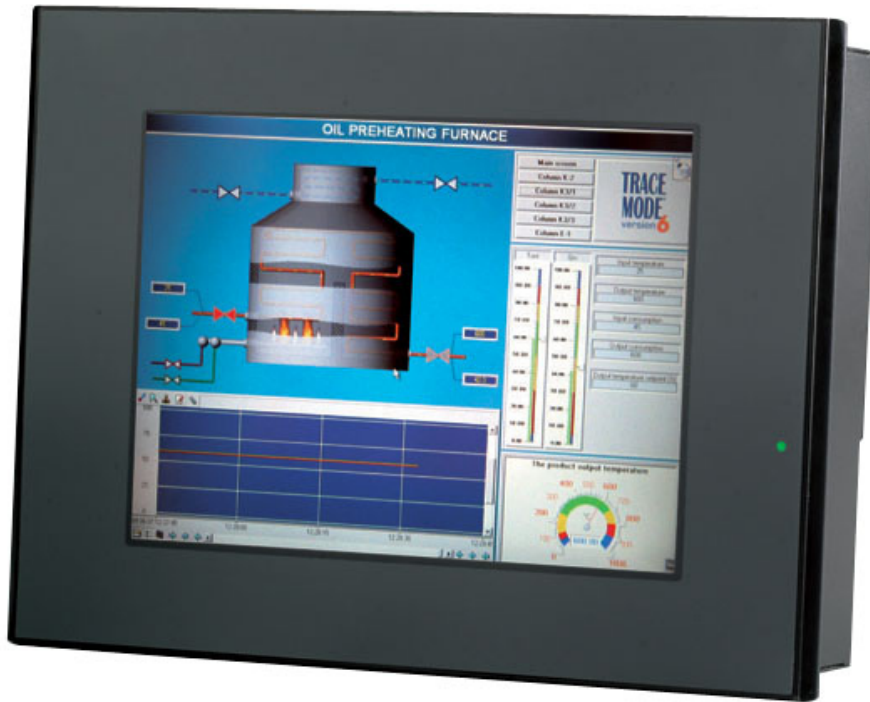




HMI Controllers



Ideal for use in industrial Automation and OEM projects

HMI controllers deliver production and business information in the correct context, at the right time, to the correct person. An HMI controller enables operators to make timely decisions that help improve plant performance and maintain regulatory compliance and product quality.

With the capabilities today, these units empower operators to access information freely. This helps to reduce downtime, decrease cost to the OEM and increase efficiency in operation.

Reduce your implementation time, increase reliability and uptime of your investment with these compact powerhouses.



Specifications

	5.7 – 8.4 (in)	10.4 (in)	12.1 (in)
Screen size	5.7 – 8.4 (in)	10.4 (in)	12.1 (in)
System memory	1 x 200 pin SO-DIMM socket, max 2GB DDR2		
Chipset	Intel® 945GSE+ICH7M		
External I/O ports	2 x USB ports 2 x RJ-45 ports 2 x RS-232 (COM1/2) 1 x RS-232/422/485 (COM3) 1 x VGA port 1 x PS/2 KB & MS, 1 x Audio Min-in, Line-out 1 x DC power input		
System Storage	1 x 2.5" SATA HDD, 1 x internal CF slot		
Display Type	TFT LCD		
Max resolution	640 x 480	800 x 600	800 x 600
Max color	262K		
View Angle	H:140 / V:100	H:130 / V:110	H:120 / V:95
Backlight lifetime	40,000 hours	50,000 hours	50,000 hours
Touch Screen	Analog resistive		
Power input	DC 11~28V	DC 11~28V	DC 11~28V
Environmental			
Bezel	molded plastic, brushed metal, stainless steel		
Enclosure	Aluminum Enclosure		
IP RATING	Nema 4 enclosure / IP 65 compliant front panel		
Mounting	Panel Mount Vesa mount 75mm x 75mm		
Dimension	204(W)x149(H)x87(D)mm	231(W)x176(H)x97(D)mm	317(W)x243(H)x76(D)mm
Net Weight	3 – 3.5 kg	5.5 kg	5.8 kg
OperatingTemp	0 - 50 °C		
Certification	FCC, CE Class A certified		



Contact us today to learn more about this system or to discuss your specific requirements.

info@invisuale.ca +1.888.530.0712



www.invisuale.com

Van Dusen Blvd, Toronto, On., M8Z 3J2, Canada

